



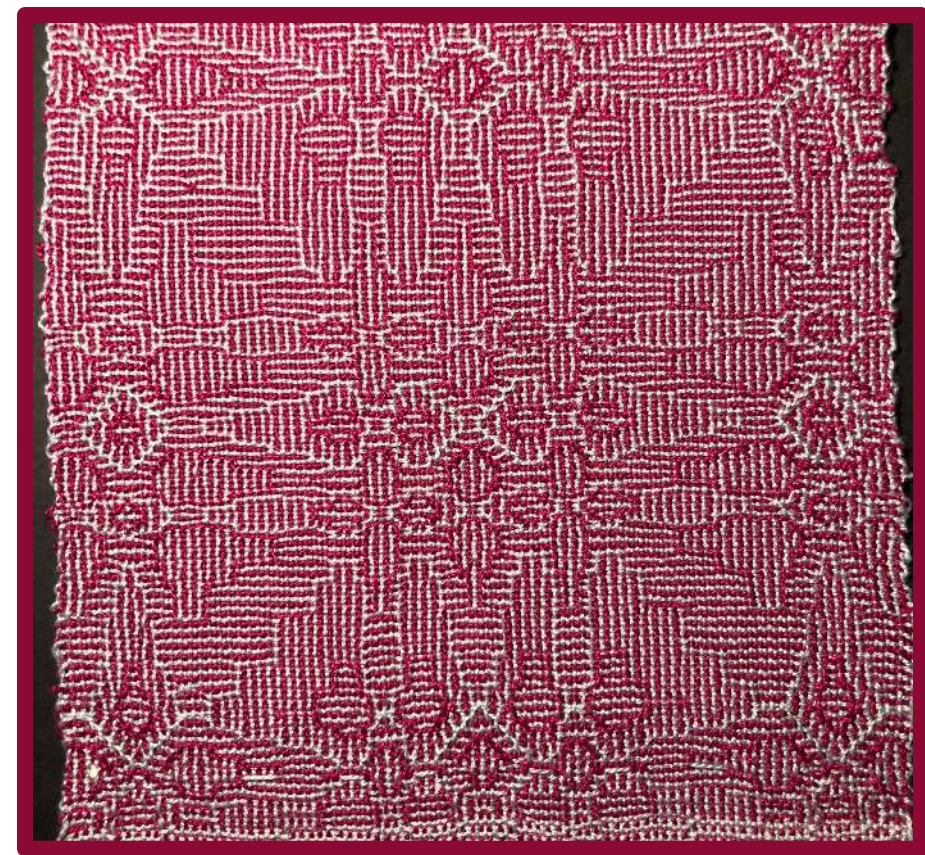
Seattle Weavers' Guild

Hot off the Loom

March 2023

Margarite Hargrave

- Shadow Weave Class Sample #54
- Warp/Weft yarns: Lunatic Fringe 10/2 Mercerized Cotton 5 Red Purple and Middle Gray from my stash
- Shadow Weave
 - 24epi on 12 dpi Reed
 - 6 shafts
- Shadow Weave alternates two shuttles one light one dark across the warp. Warp is threaded with one light and one dark in each dent.
- Draft note- Double Threads Dramatic on Repeats



#54
Right
Side



#54
Wrong
Side

Christine Sutton

- Doubleweave pick-up project
- Card Woven Doll House Accessories
- Coasters .5" wide, woven on 8 cards
- Placemats 1.125" wide, woven on 18 cards
- 1/12 scale (1" = 1')
- 3/2 cotton warp and weft
- threaded in designs



Patty Abrahamsen

- A saddle blanket pattern from Mary Meigs Atwater was adapted for a project in the March/April 2019 issue of Handwoven which I followed to weave this rug.
- Warp: 8/4 cotton rug yarn at 6 epi
- Weft: 2-ply natural dyed wool yarn from Teotitlán del Valle (“the weaving village”), Oaxaca, Mexico
- Structure: Boundweave twill
- Finished dimensions: 23” x 44”



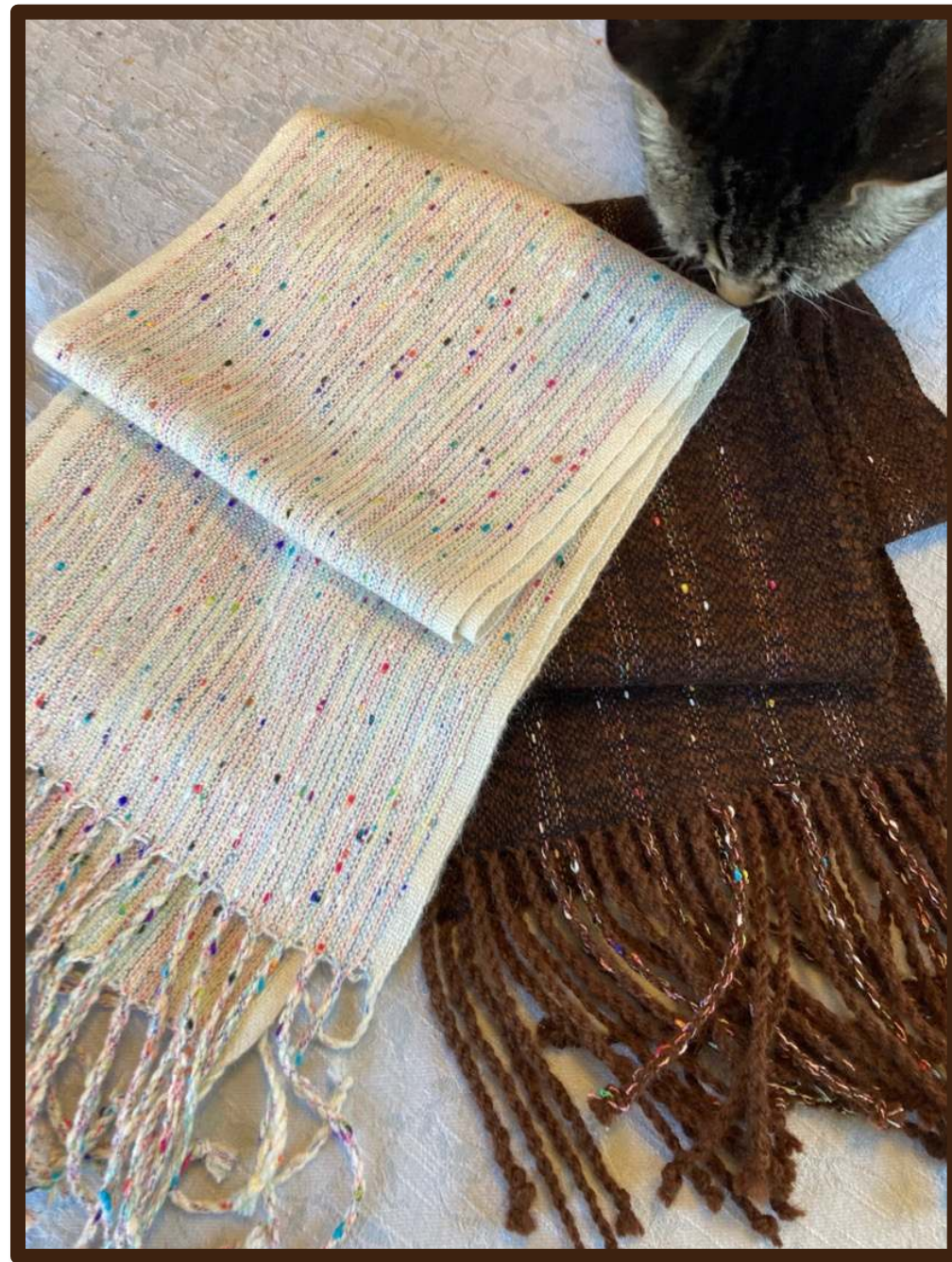
Linda Stryker

- Crackle Weave from Marguerita Davison's Handweavers Pattern Book, titled Mary B
- 8/2 cotton
- This was a work in progress on a donated loom and was started by the late Gail Tanaka. No instructions or treadling pattern came with it. One of our Senior Center weavers and newer Guild member Susan Dirk, sleuthed out the pattern and completed two towels, to be gifted back to Gail's husband, David.



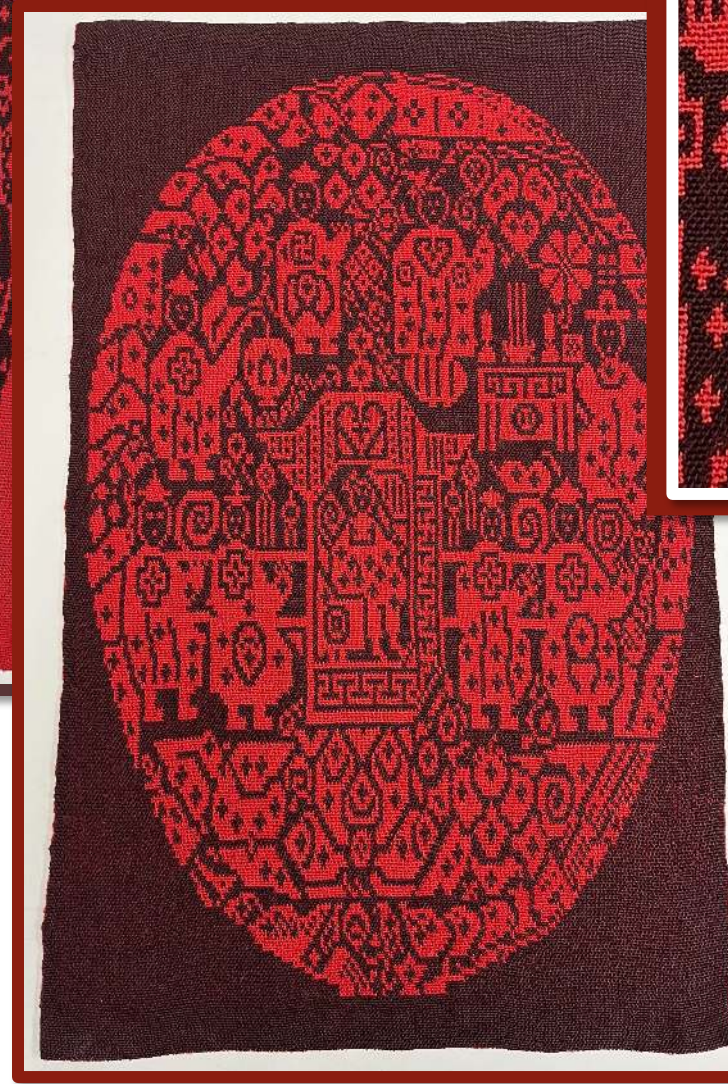
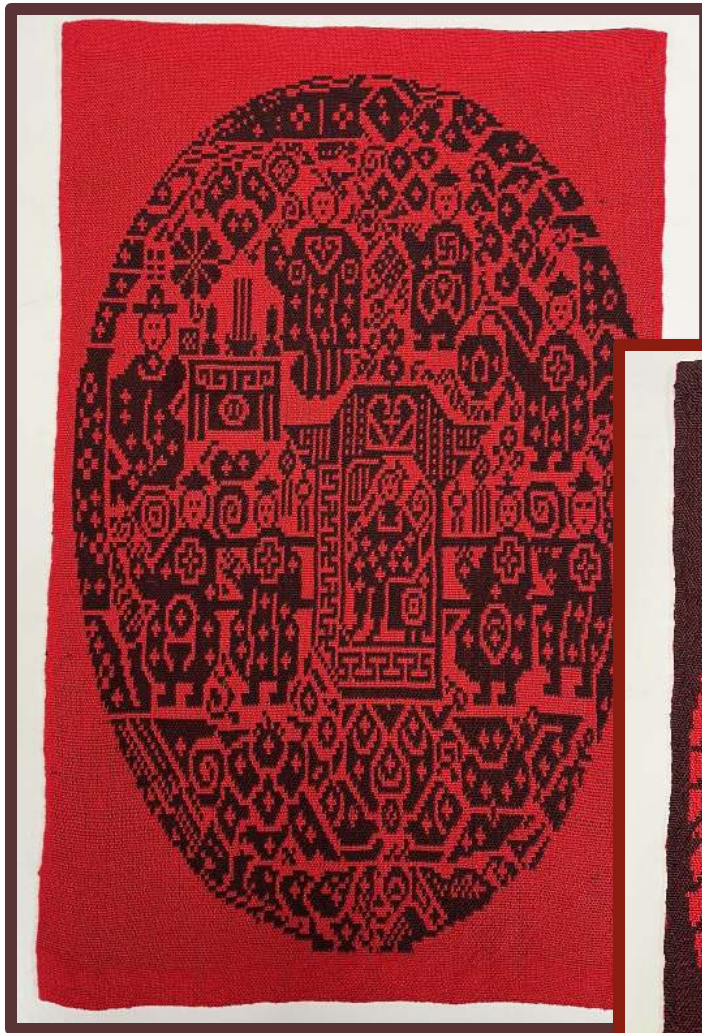
Cathy Smither

- Two scarves to test out new Make It Tweed yarn:
- Brown scarf -- warp: handspun alpaca + Make It Tweed, weft: Jaggerspun Merino, 12epi, plain weave
- White scarf –
Warp: Jaggerspun Zephyr + Make It Tweed,
Weft: Zephyr, 16 epi, plain weave



Nancy Tracy

- Doubleweave pick-up project
- Structure - doubleweave pick-up - a 4 shaft, 4 treadle weave woven on a Baby Wolf loom
- Warp & weft are 20/2 cotton
- Sett is 34 epi/layer, total 68 epi
- Sleyed 2 ends/layer per dent in a 34-dent reed



Seattle Weavers' Guild is participating in the Association of Northwest Weavers' Guilds (ANWG) Conference in Bend, Oregon, June 2023



The theme of this year's conference is Fiber Connections. The Seattle Weavers Guild is creating Name Draft Towels to highlight the many locations of our wonderful members.

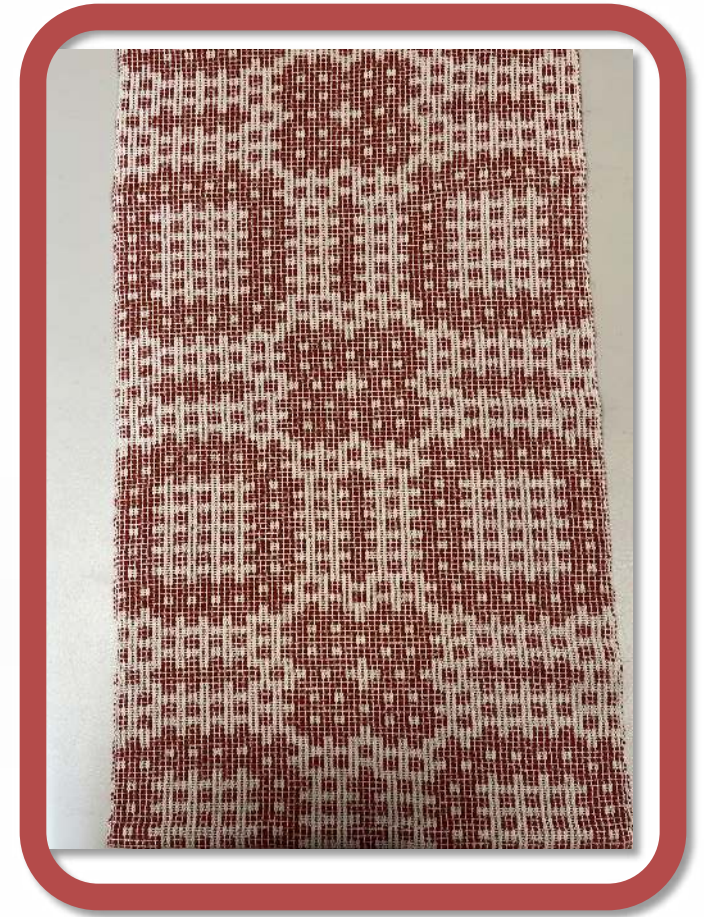
Name Drafting is **when you assign a harness on your loom to a letter in the alphabet**, then select words that have meaning for you and assign the letters in the word to the harnesses on your loom to create a personalized piece of handweaving.

-  North - blue
-  Seattle - green
-  South - rust
-  East - gold
-  West - purple



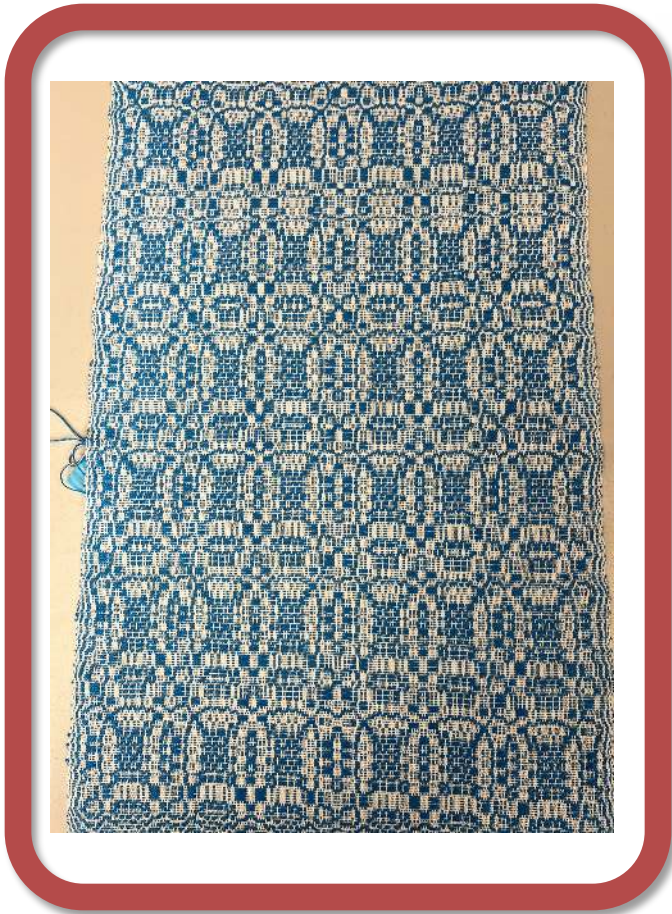


Ann Lansdon
CoveRDVashon



Bette Bell
Milton 1990

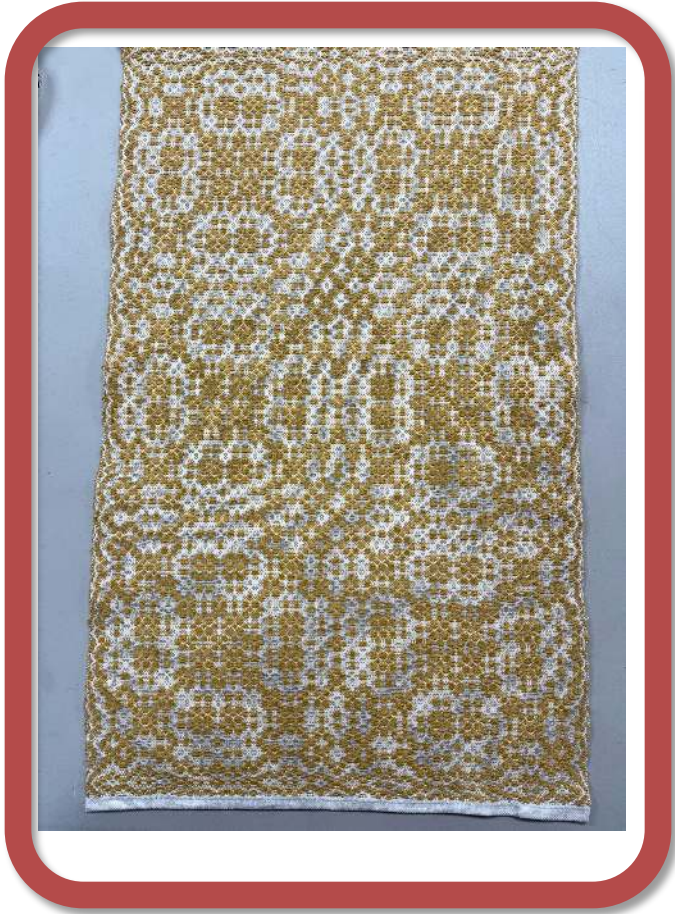




Cheri Bridges
Woodinville Washington

Colleen Sorensen
University PL



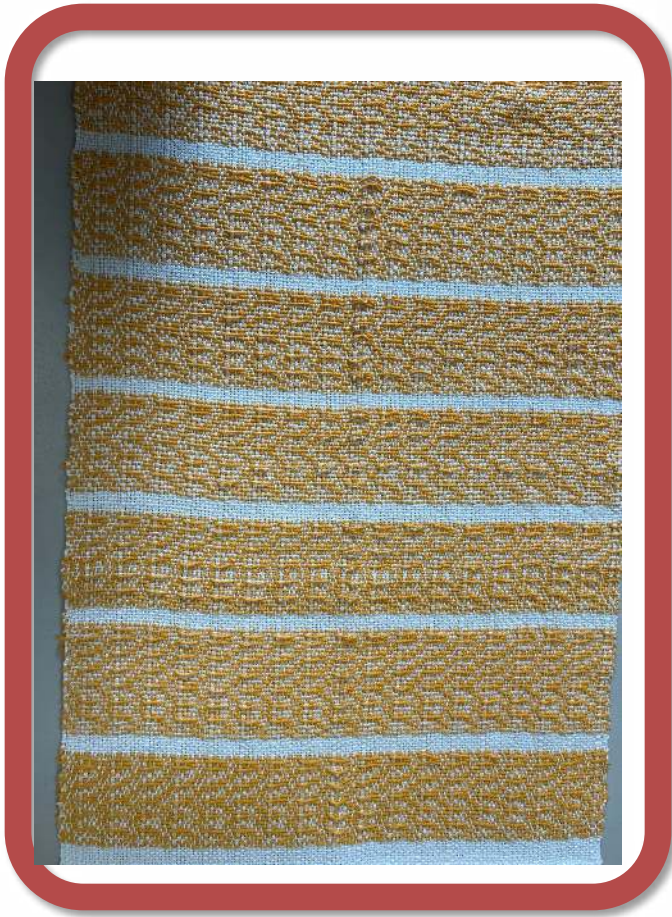


Janet Dawson
Cape Breton NS



Jennifer Shuster-Clark
Greenwood, Seattle





Jo-Ellen Smith
Issaquah
Washington

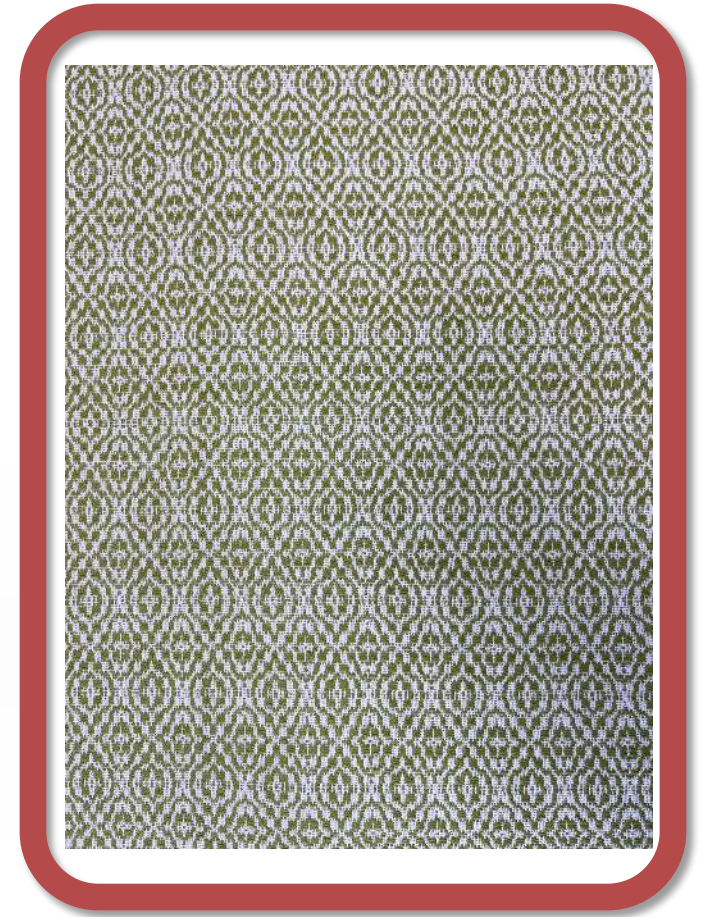
Cathy Crone
Anacortes on
Fidalgo Island





Louise Gould
Simsbury and
Connecticut

Margie Wetherald
Queene Anne



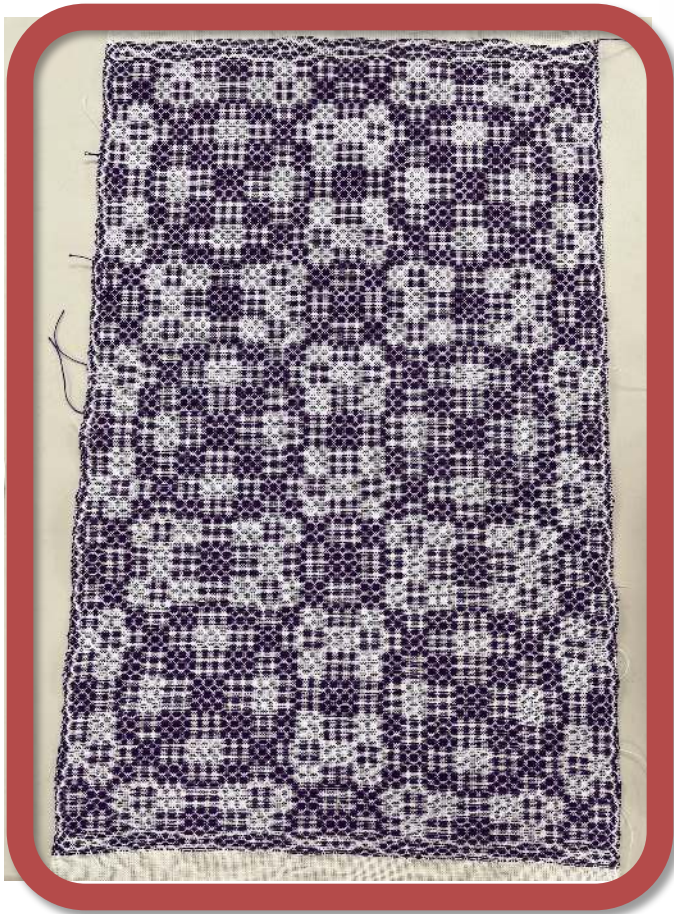


Pat Donald
Opelika



Roxie Rochat
Camano Island



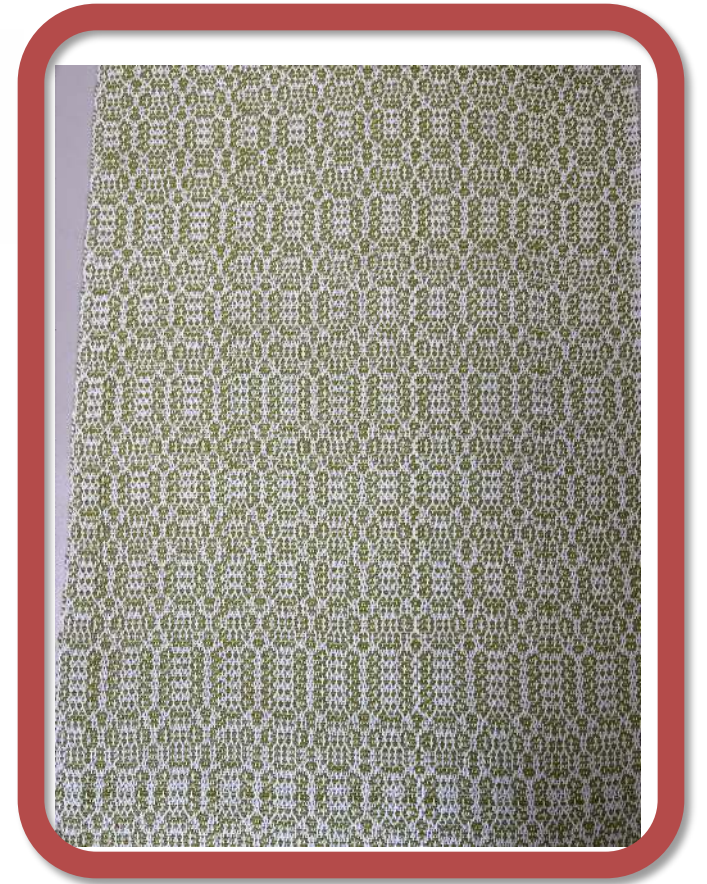


Sue Willingham
VashonWA

Susan Dirk
Rainier Beach



Wilma Boyd Meadowbrook Seattle



Thank you for sharing your
beautiful work.

Are there any additional projects to share?

If you would like to share your project at the next
Seattle Weavers' Guild Meeting, email your photos and
a short description to:

hotofftheloom@seattleweaversguild.com