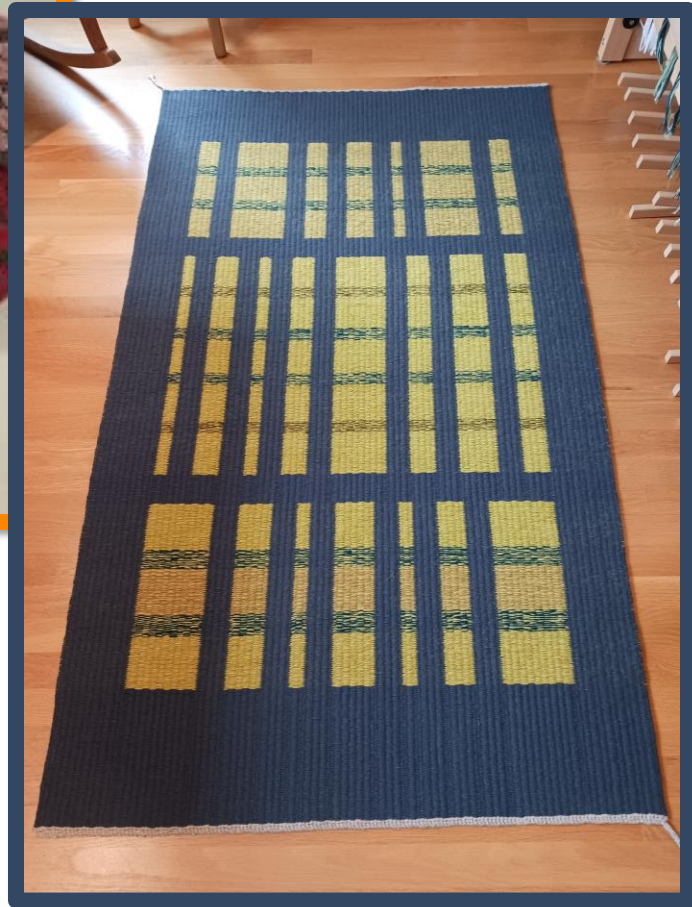


# Seattle Weavers' Guild



Hot off the Loom

April 2023

**Wearables**

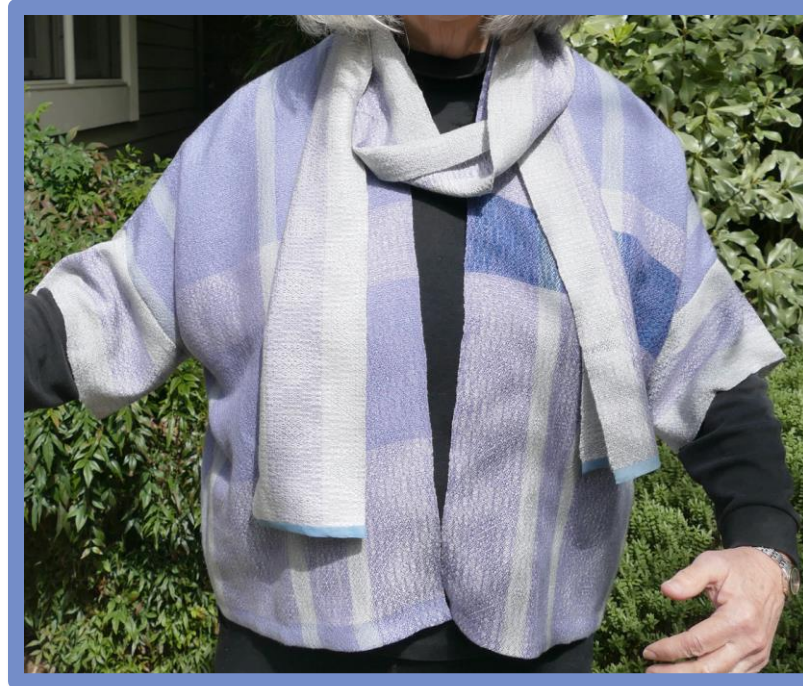
# Pam Cox

- 8/2 cotton
- Dyed warp
- “Moire” from Echo and Iris book



# Judith Warren

- Lavender Dream Coat. Unlined silk and Tencel jacket with exceptional softness and drape. Original design. Matching scarf
- 20/2 silk warp, 8/2 & 10/2 Tencel weft
- Crackle
- From handweaving.net & Ralph Griswold
- threading is mirror repeat of 234 thread pattern; treadling is 94 thread sequence
- 24 EPI /24 PPI, 8 shaft design



# Sarah Kaltsounis

Dance leggings for a member of the Alaska Kuteeyaa Dancers group

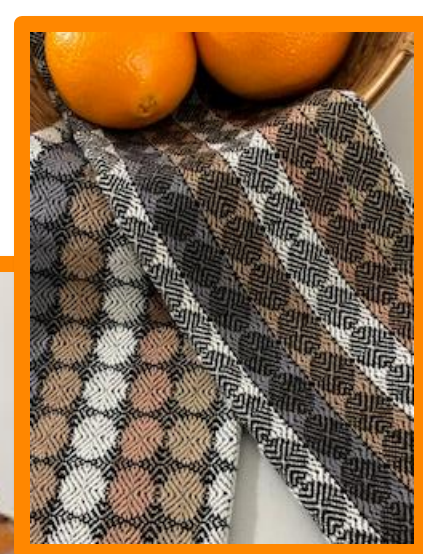
- Warp: merino wool, spun on a spinning wheel (10 EPI)
- Weft: commercially dyed merino fingering-weight yarn
- Trim: Beaver fur
- Weaving techniques: Northwest Coast Ravenstail weaving, using a design from Wooshkindeinda.aat Lily Hope.
- Warp hangs loose without tension from a loom bar and one or two colors of weft yarn are hand-twined across each row.



*Kitchen*

# Maryann Ariizumi

- Cotton Hand towels for kitchen or bath
- 8/2 cottons, 8/2 cottolin, 5/2 mercerized cotton
- Point twill, sett 26 epi
- 16 shafts



# Peg Rutchik

Woven fabric for  
kitchen chairs

- Warp and weft both  
10/2 cotton
- Twill structure
- 30 epi
- 4 shafts





*Huck Lace*

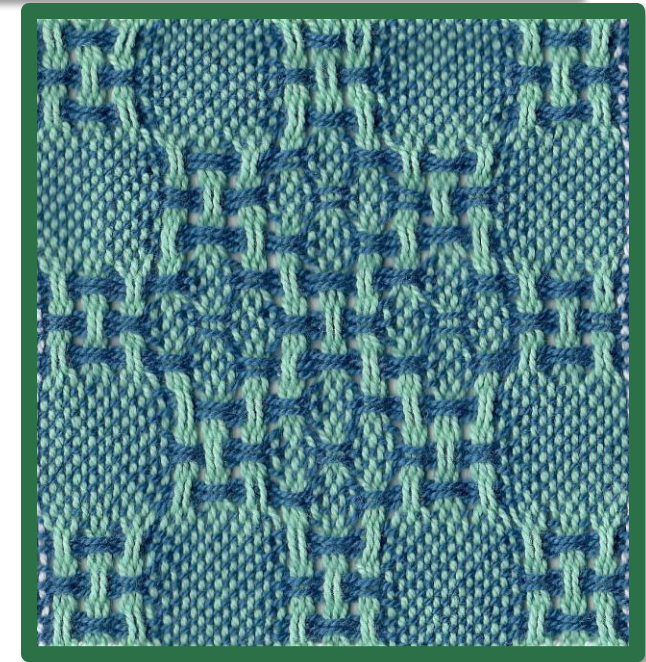
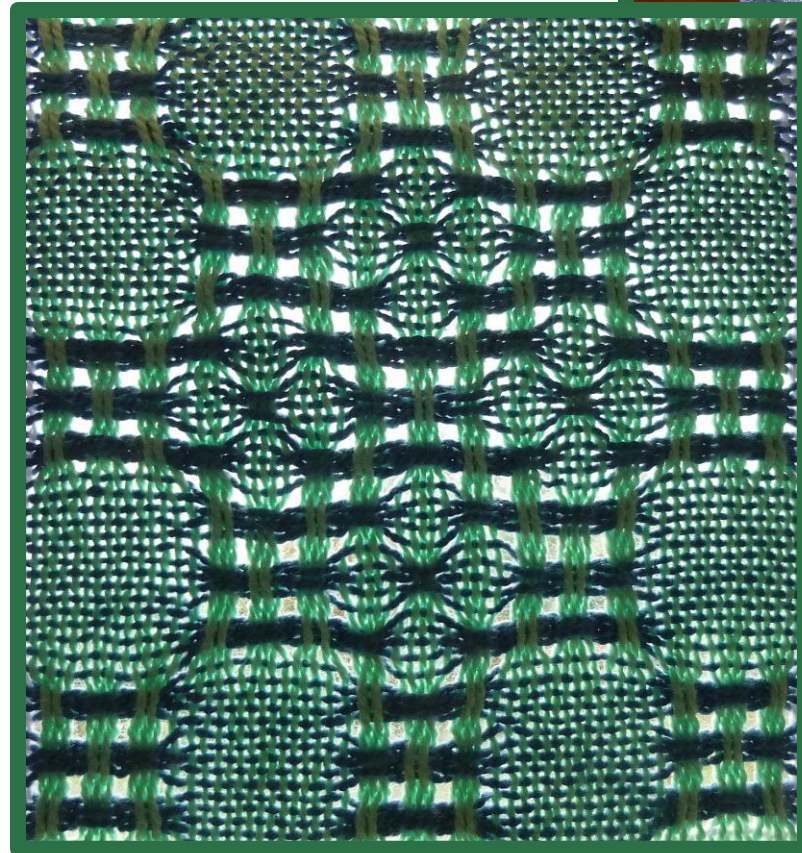
# Kathy Veit

- Huck Lace towels from Rosalie Neilson class
- 8/2 cotton
- 8 shafts



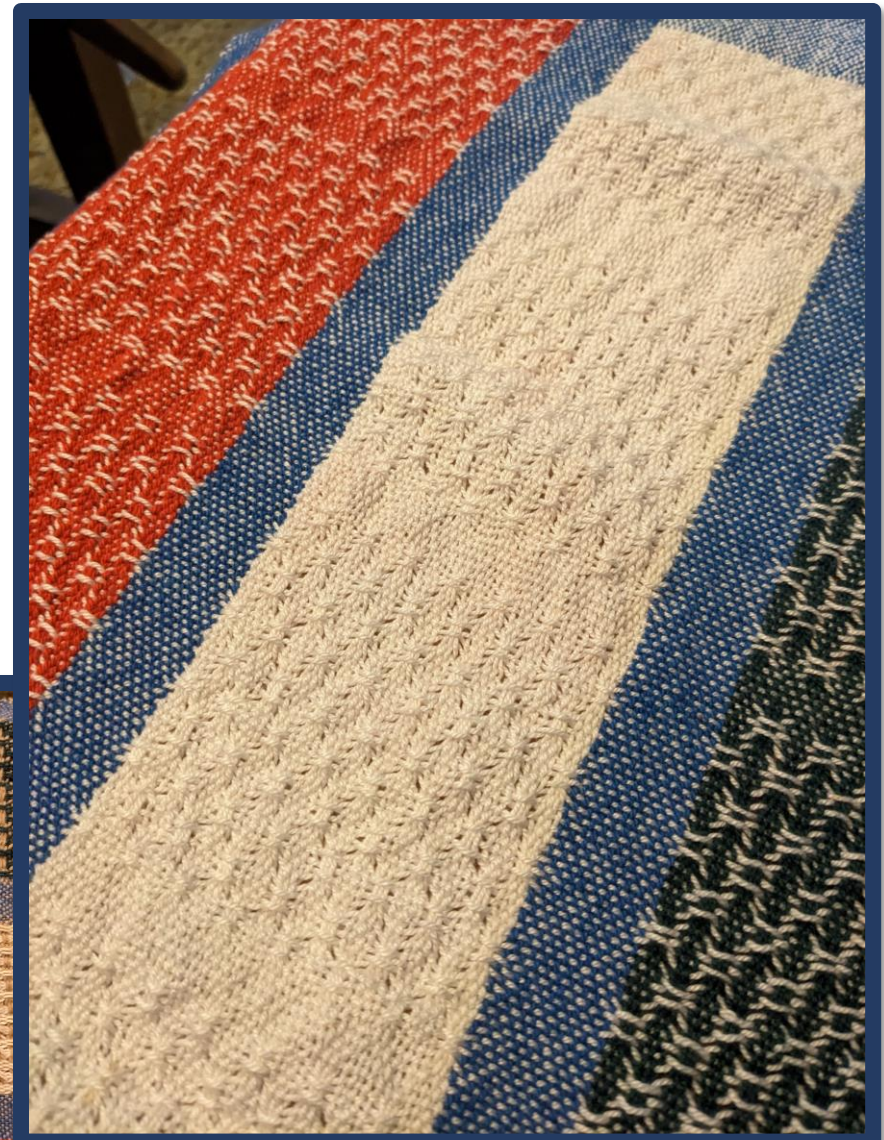
# Roxie Rochat

- Towels from the Huck Lace Workshop. One motif is pictured both as scanned and photographed when backlit.
- Warp/weft: 8/2 unmercerized cotton
- Huck Lace
- 18epi
- 8 shafts



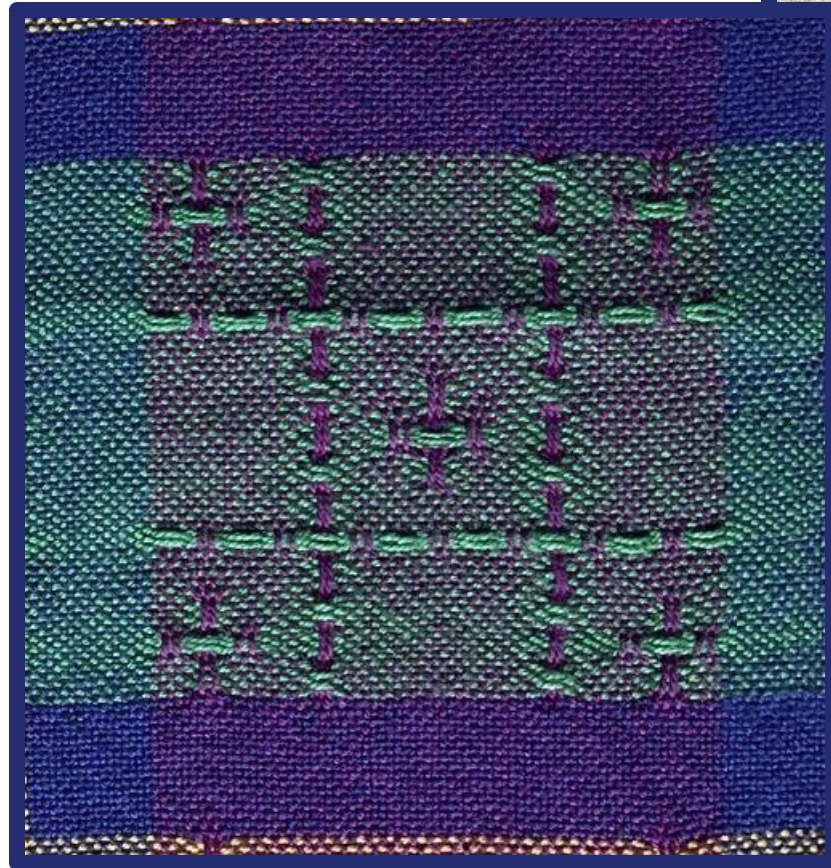
# Laurie Williams

- Huck lace sampler. Yarn is 8/2 unmercerized cotton warp with 8/2 cottolin weft. 5 different patterns.
- Huck lace towel is on the same warp with the unmercerized cotton weft in natural. All one pattern.
- Woven on 4 harness loom.



# Mimi Dillman

- Huck towel - project from this month's class with Rosalie Neilson
- 8/2 Brassard cotton
- 18 epi
- 8 shafts



# Nancy van Roessel

## Towels

- Huck lace with our own designs.
- 8/2 unmercerized cotton
- Sett is 18 epi



RUGS

# Annette Mentzer

- One warp, two rugs.
- Wool rug warp and Llama.
- Darker areas are 4 ply Llama
- Lighter colors are from a two-ply from the same batch of Orcas Island Llama.
- 8 EPI, with a 2 and 2 plain weave on a 4 shaft Bergman counterbalance loom.

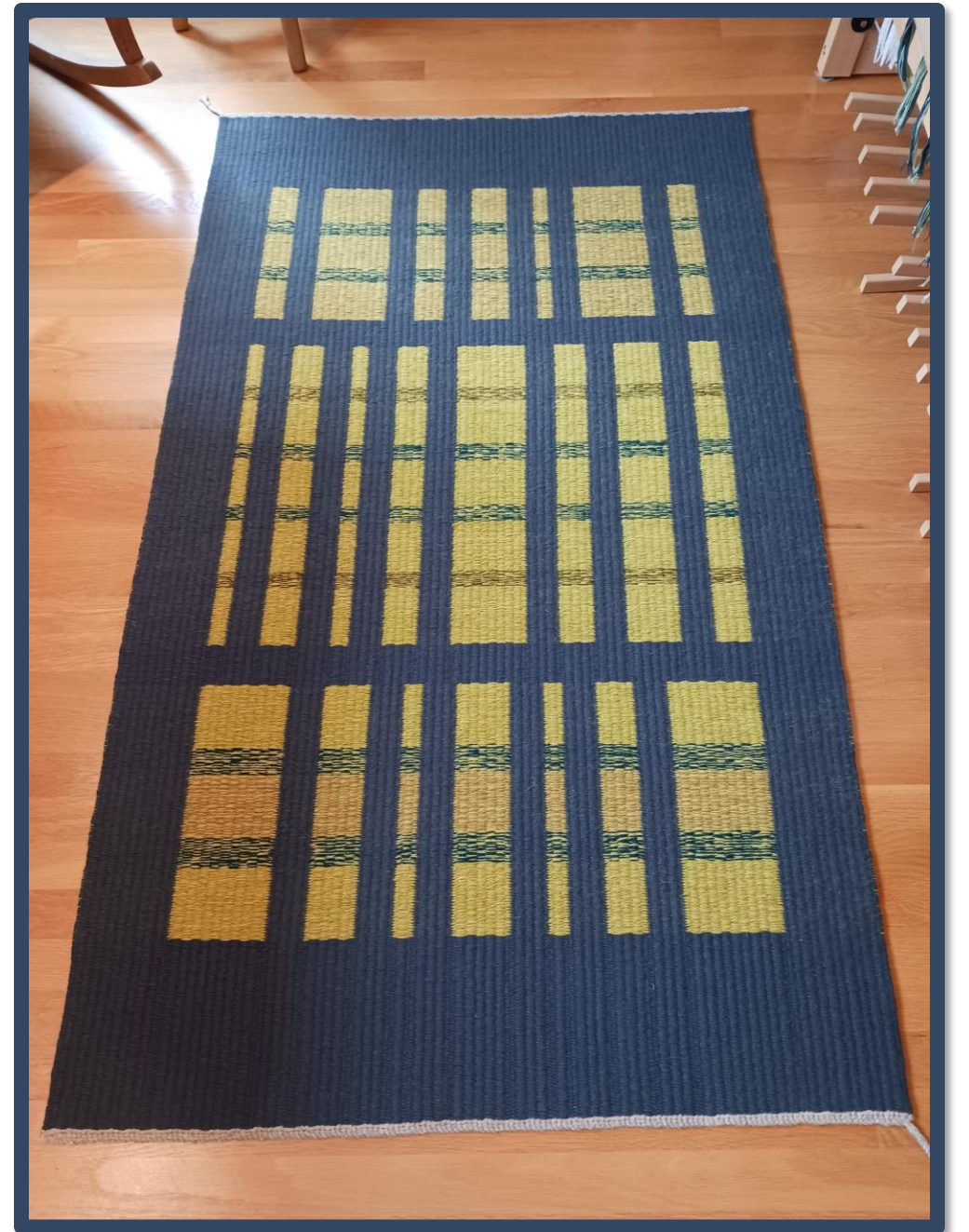




# Linda Shaw

## Block weave rug

- 8/5 linen warp and wool weft
- 4 – end block weave with shaft-switching
- Sett is 4 working ends per inch – 8 ends per inch doubled
- 4 shafts



# Terry O'Neil

- The first wool rug I've woven in a couple of years - it has a few flaws.
- Colors are purple and turquoise.
- Plain weave with "pick and pick" technique for the vertical stripes plus various colors of wool yarns inserted in the horizontal band.
- 2 shafts. Linen warp, wool weft, sett 4 ends per inch.
- Size 27.5" x 40"



# Rebecca Perry

## Rag rug

- Rug warp – Maysville, various blues (stash busting)
- Weft is torn sheets
- Sett is 6 working ends per inch – 12 ends per inch doubled
- 4 shafts
- 30" x 93"



Thank you for sharing your  
beautiful work.

Are there any additional projects to share?

If you would like to share your project at the next  
Seattle Weavers' Guild Meeting, email your photos and  
a short description to:

*hotofftheloom@seattleweaversguild.com*