

Seattle Weavers' Guild

Hot off the Loom

May 2023

Awww.....

Chuck Eberdt

- 3" X 5" rug
- 8/5 linen warp sett @ 5 epi
- 4-end block weave using Collingwood's shaft switching technique on 6 shafts.
- Weft is Brown Sheep Lamb's Pride worsted, two strands/ shuttle, 3 shuttles/fell



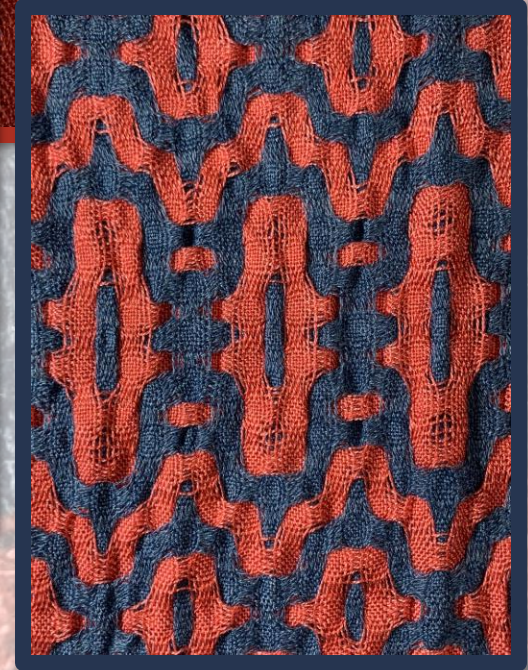
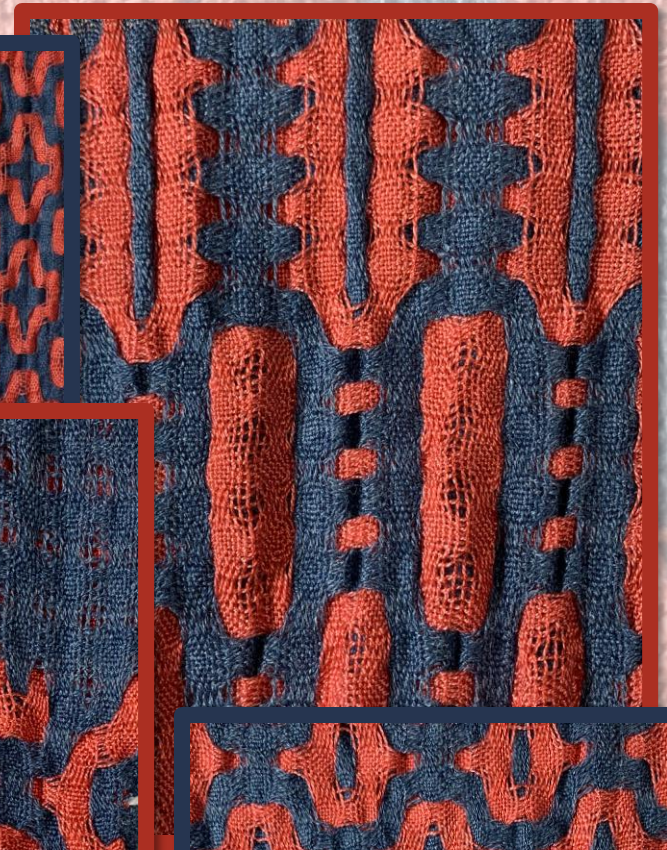
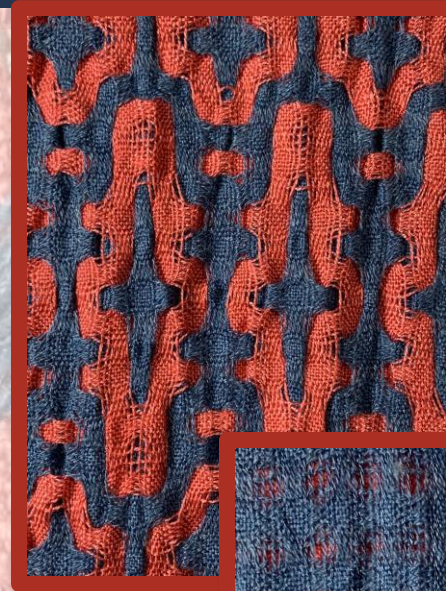
Nancy Coleman

- Deflected Double Weave
- # of shafts: 8
- Sett: 290 ends in 10 inches, at 3-3-4 epi for the Zephyr and 2-4-2-4 epi for the Tencel
- Warp and weft were shale and taupe Tencel from my stash, and vanilla wool/silk Zephyr from the Yarn Barn.



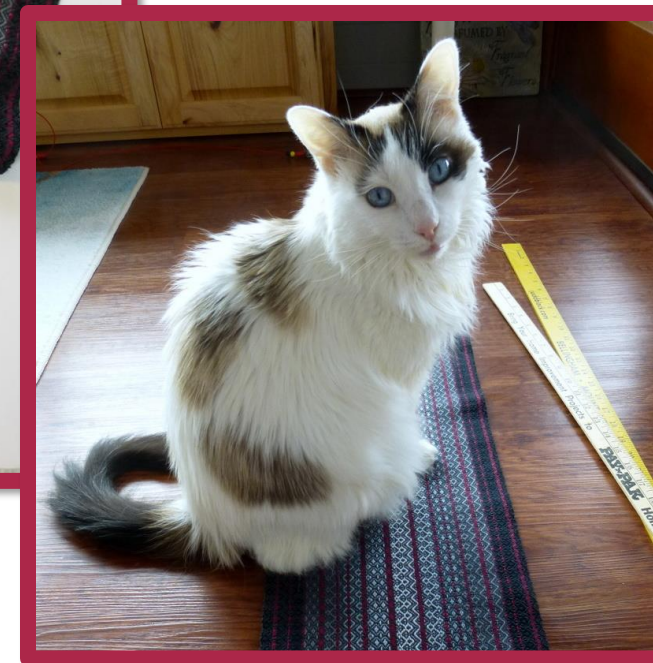
Elaine Palmer

- Deflected Double Weave Sampler
- My warp is Blueberry Zephyr 18/2 50%/50% Wool/Silk and Deep Sea Coral 8/2 Tencel from WEBS.
- Weave two shuttles, one for each layer. This threading design has blocks of 10 threads so the weft was 10 pics each color.
- It was a very fun workshop!



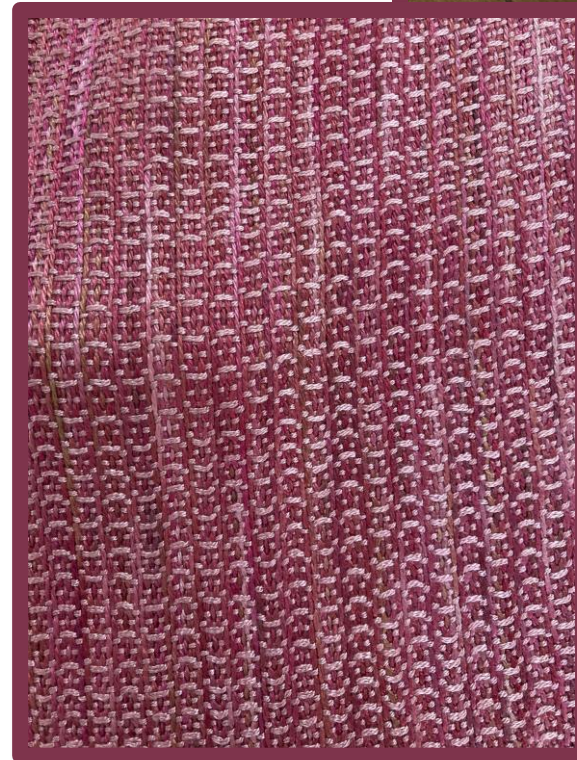
Roxie Rochat

- Vision Quest scarf
- 10/2 Lunatic Fringe mercerized cotton (the Gray Matter kit + Cranberry)
- 27 epi/ppi
- 8-shaft M&W twill
- Woven for The Handweaving Academy's "From Dull to Brilliant Weave-Along"
- Won the Weavers' Choice Award in the Off Road Category
- Optional: Cat with scarf, submitted in the "Best Weaver's Helper" Category



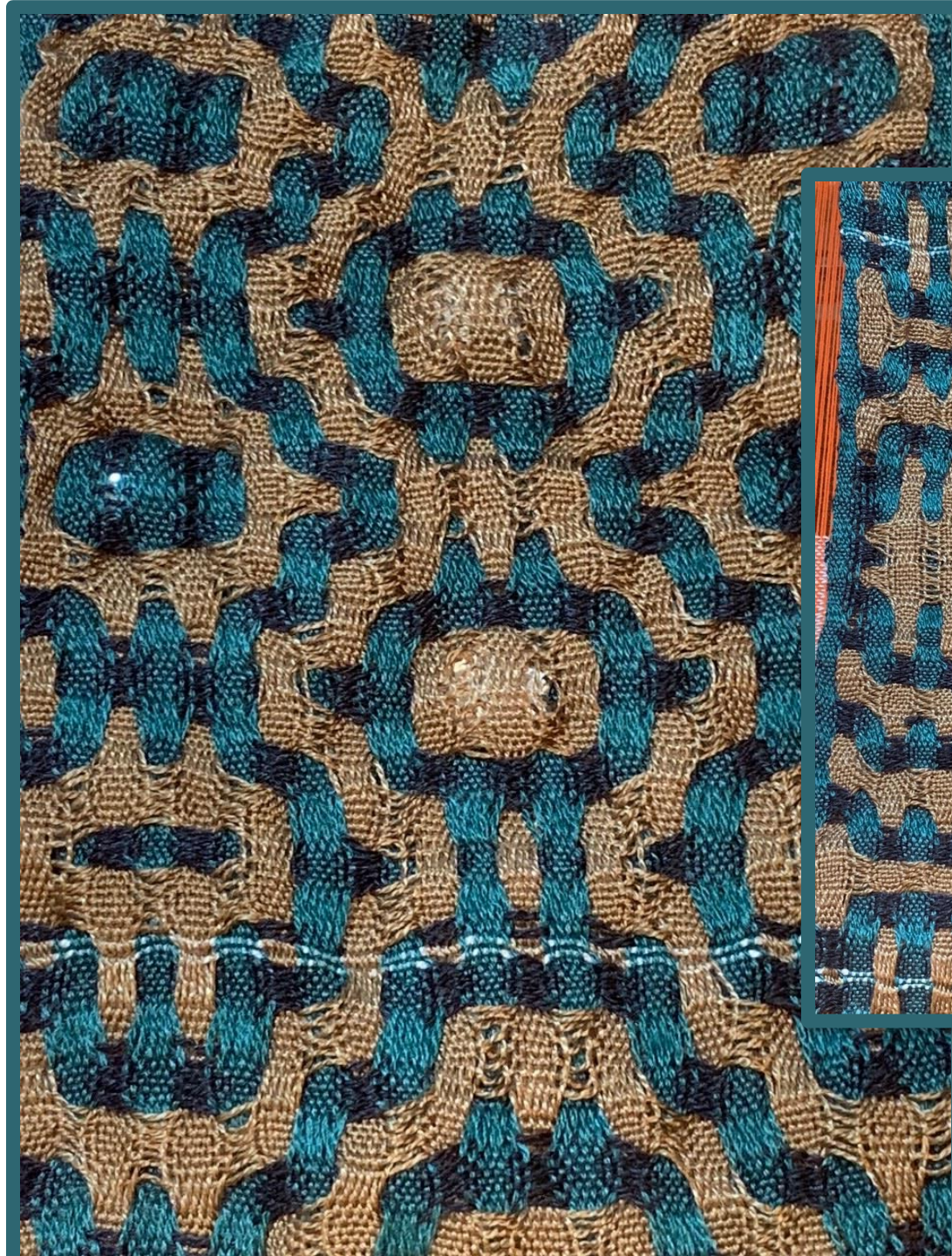
Susan Cross

- Bamboo Scarf
- Warp: Midori 100% Bamboo (1320 yds/lb) from Fiberlady in Lewisville, TX
- Weft: 16/2 Bamboo, used doubled
- Weave Structure: Strickler # 392 (point twill threading)
- Sett: 20 epi
- Number of shafts: 8 (but only 4 treadles)



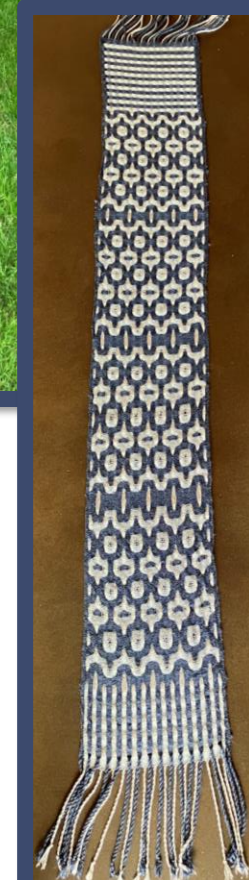
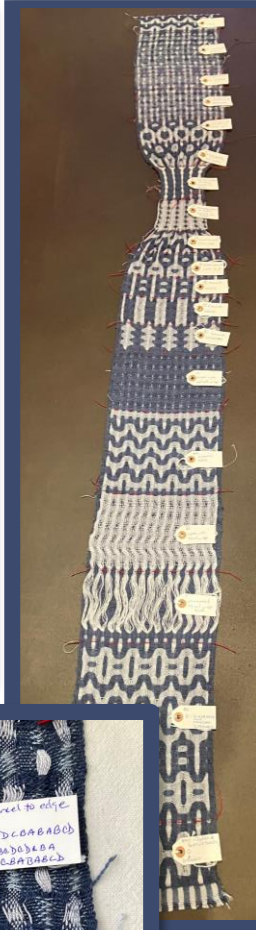
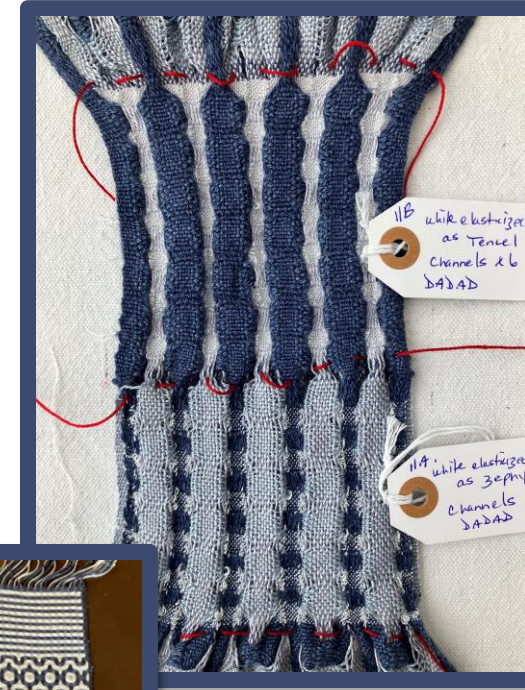
Rebecca Cushman

- Deflected double weave from April workshop
- Yarns: zephyr wool/ silk and 10/2 Tencel both warp and weft
- 30 epi
- 8 shafts



Janet Stanley

- Deflected Doubleweave
April workshop,
sampling and shawl.
- Warp: Alternating stripes
of a Jagger Spun 18/2
Zephyr (wool-silk) Indigo
and 8/2 Tencel Silver (Gris Pale)
- Weft: Jagger Spun 18/2
Zephyr Blueberry for Sample and Indigo for Scarf
8/2 Tencel Silver and then Slate
- Structure: Deflected Doubleweave (DDW),
Profile A Point Twill threading; Sett: 30, 8 Shafts



Susan Dirk

- Tea Towel with multicolored border
- 16 x 23 inches
- 4 - shaft goose eye twill pattern
- Cream color 3 strands of 20/2 organic cotton
- Hem portion is in plain weave using 1 strand of organic cotton in the weft
- Weft colors of orange, red and wine are Maurice Brassard 8/2 cotton.



- French Tea Towel with Red Stripe
16 x 24 inches
 - 8 - shaft twill pattern
- Cream color is 3 strands of 20/2 organic cotton
- Hem portion is in plain weave using 1 strand of organic cotton in the weft
 - Red and Ivory colors are Maurice Brassard 8/2 cotton

Seattle Weavers' Guild ANWG Towels

Astrid Bear, Lynwood WA



Alice Burr, Freeland
Whidbey Island



Julie Ceffalo, Carlsborg



Mimi Dillman, Snohomish



Rebekkah Cadorette,
Port Townsend Washington



Margie Wetherald,
Queen Anne.



Heidi Bennett, Seattle WA.



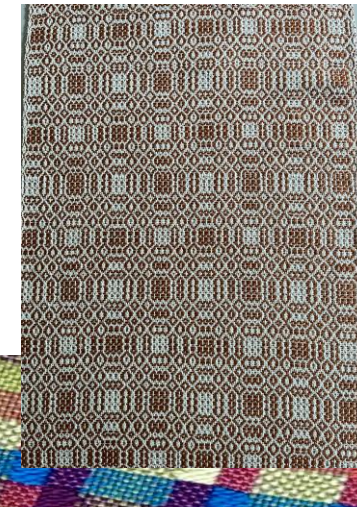
Ann Nez, 98105



Carole Stewart,
Lake Burien WA



Holly Haynes,
Auburn, WA



Janet Stanley,
Vaughn Washington

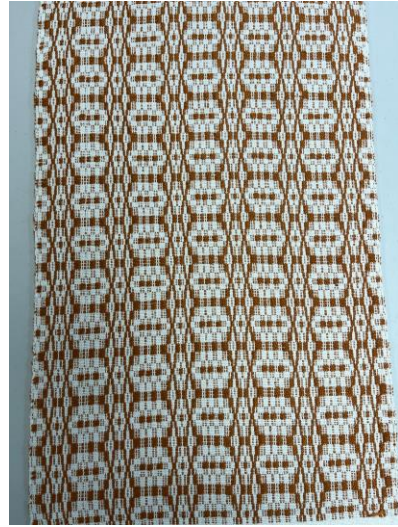


Seattle Weavers' Guild ANWG Towels

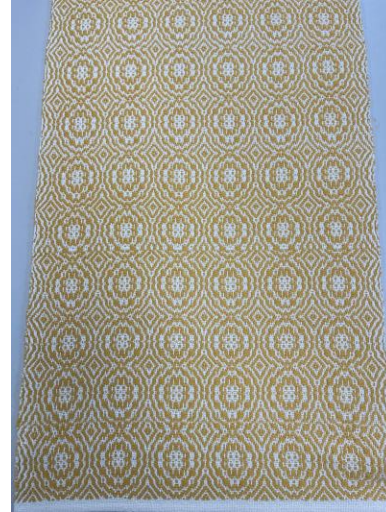
Linda Stryker, Seahurst WA



Pam Cox, Gig Harbor



Cheryl Reed,
Richland_99352



Jacque Luke, Mazama98833



Lisa Brown, Burton
Loop, Vashon

Susan Snover, Winthrop



Jan Harada, Silverdale



Kate O'Hare, Vashon-Maury



Thank you for sharing your
beautiful work.

Are there any additional projects to share?

If you would like to share your project at the next
Seattle Weavers' Guild Meeting, email your photos and
a short description to:

hotofftheloom@seattleweaversguild.com