



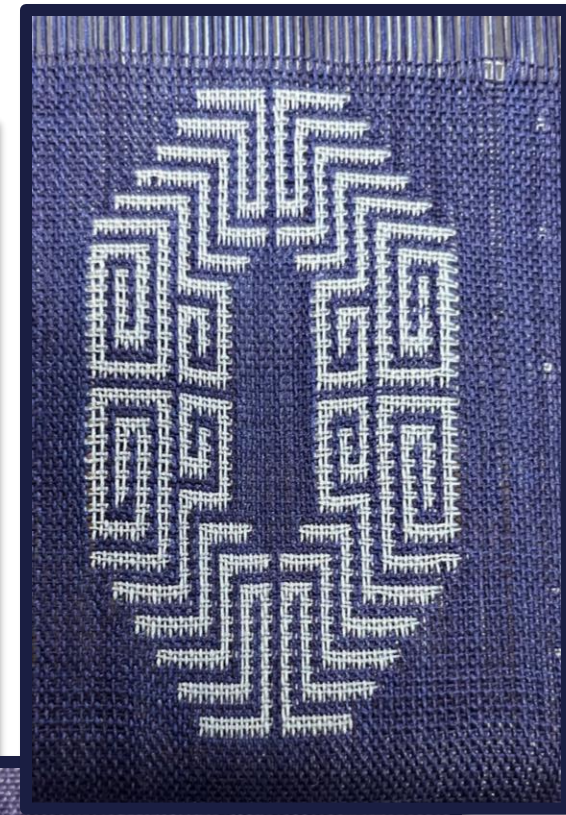
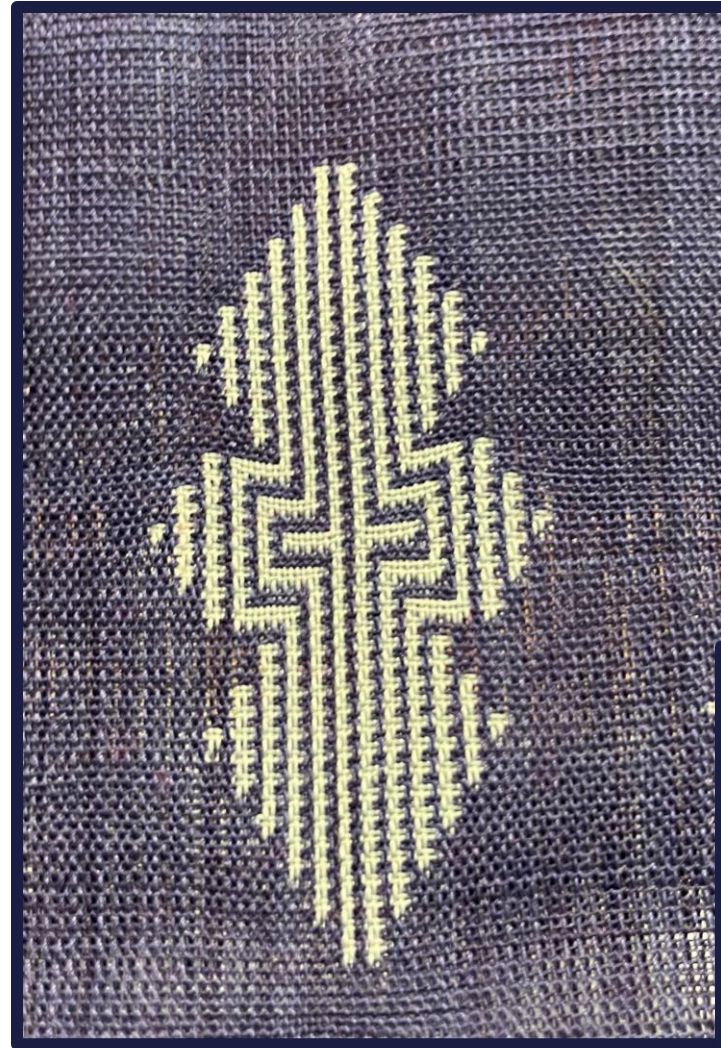
# Seattle Weavers' Guild

Hot off the Loom

February 2024

# Nancy Tracy (Z)

- These are all doubleweave pick-up woven on a baby wolf loom.
- The yarn is about a 30/2 cotton sett at 40 epi per layer for a total of 80 epi.
- 4 ends per dent in a 20-dent reed.
- The images are taken from graphs for isolated images in Marian Stubenitsky's book "Double Twist".



# Sarah Kaltsounis (Z)

Two Northwest Coast dance aprons, gifted to the leaders of the Washington-based Alaska Kuteeyaa Dancers group.

- Based on the designs from the two sides of the Swift Blanket from the mid-1700s, housed at Harvard University's Peabody Museum of Archaeology and Ethnology
- Warp: wheel-spun merino wool
- Weft: fingering-weight merino wool; yellow wefts dyed in traditional manner using wolf lichen (*Letharia vulpina*)
- Weave structure: Northwest Coast woolen weaving, northern geometric style. Finger-twined on a gravity-weighted bar loom.
- Trim: Beaver fur, smoked brain-tanned deer hide, deer dew claws, tin jingle cones



# Carole Stewart

Small Format Tapestry woven on a copper pipe loom.

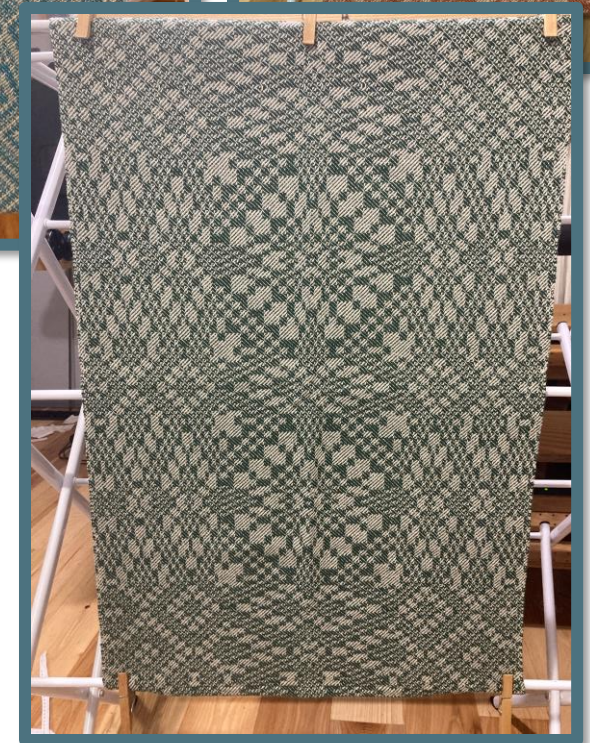
- It became an abstract landscape that lends itself to many interpretations.
- This tapestry is 5x6 inch handspun weft.
- The weft is hand dyed with mostly acid dyes.
- The set was at 8 epi.
- The quality of the hand spun yarn gives it texture and a softness that adds to the flow of the landscape.



# Jennifer Shuster

## Woven Kitchen Towels

- Warp/Weft: Maurice Brassard 8/2 Cotton
- Sett/PPI: 22 EPI/22PPI
- Structure: 10 block, 4-end turned twill
- Shafts: 40
- Other: 20 yard warp for a total of 18 kitchen towels. All of them were different but these are my favorite.



# Georgean Curran

## Potholders

- I used the 10 inch potholder loom.
- There was an interesting article on the newest Handwoven showing man had woven and interesting story about his work.
- There was a web site giving thousands of patterns similar to [handweaving.net](http://handweaving.net).



# Georgean Curran

## Placements and Table Runner

- Two sided different colors on each side
- 4 shaft overshoot using 3 shuttles one for each color and one for the tabby for the overshoot



# Georgean Curran

## Angel

- The angel is a blended draft warp of an 8 shaft huck and 4 shaft overshot.
- Used 12 shafts total.
- I used 10/2 pearl cotton sett at 24 epi.





# Linda Shaw

This is a rug from the Sara Bixler Zigzag Runners workshop

- Warp: 8/2 cotton - black
- Weft: 8/2 cotton - black and rag strips
- Plain Weave on 4 shafts
- Sett: 16 epi
- Finished dimensions: 19"W x 41"L
- The photos are the fabric that I cut into strips and the finished rug.



# Rebecca Cushman

I attended the Zig Zag rugs class taught by Sara Bixler in January and wove a table runner.

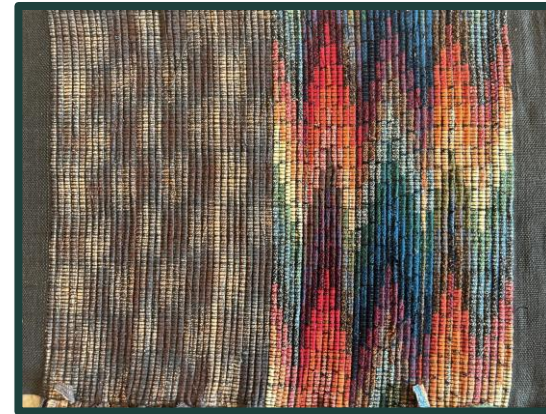
- Materials were 8/2 cotton warp and a striped shirt purchased at a 2nd hand store that was cut into 1/2 inch stripes. My table loom was warped at 16 epi in plain weave.
- Finishing consisted of trimming the rag ends at the selvage and adding a bias tape binding.



# Nancy Coleman

## "Zig Zag Rag" Placemats à la Sarah Bixler's SWG workshop

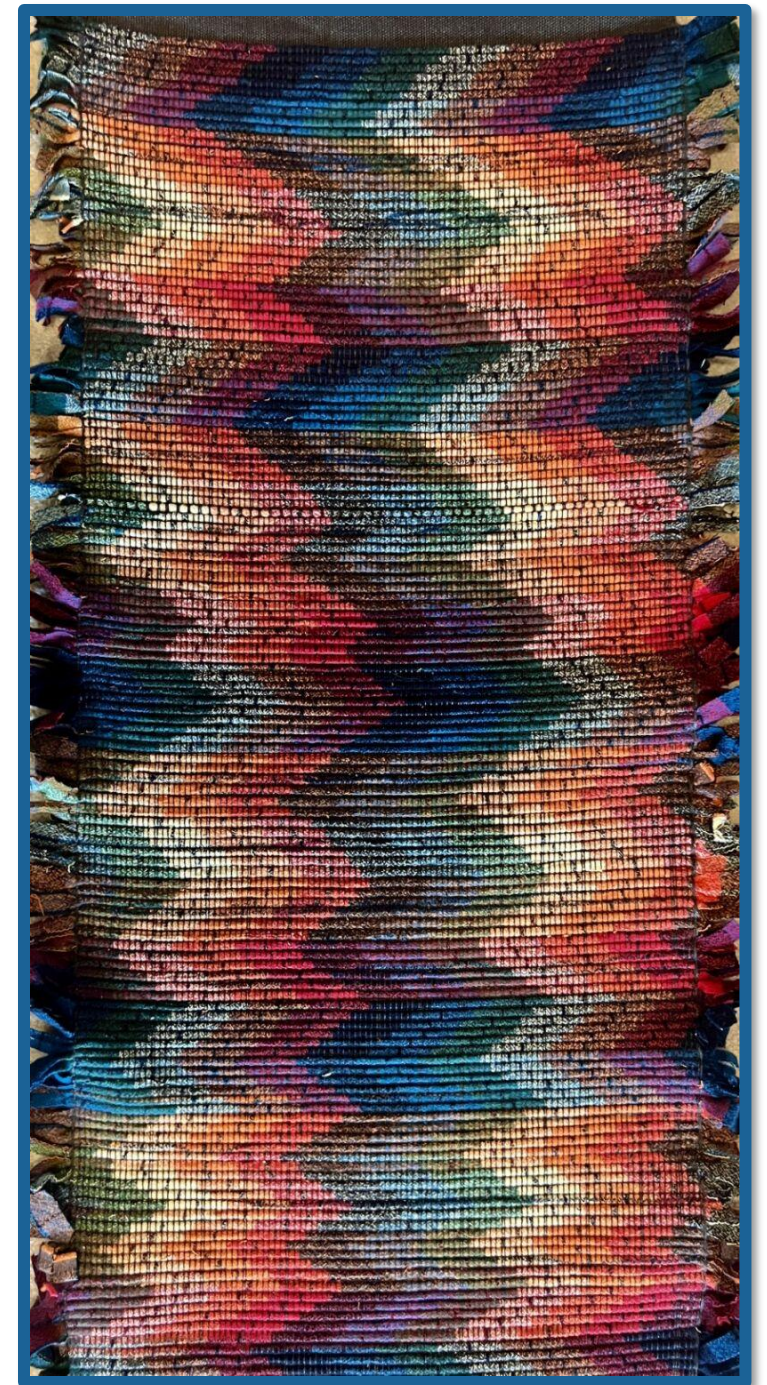
- Six placemats (not yet hemmed). Each mat is has two designs to it and all six mats are different.
- Warp: Tencel 8/2 -- dark grey
- Weft: 1/2" strips cut from new flannel materials
- Weave structure: plain weave
- Sett: 16 epi
- # of shafts: 4 shafts on a Dundas travel loom treadled



# Nancy Coleman

"Zig Zag Rag" Table Runner à la Sarah Bixler's SWG workshop

- One table runner woven from strips of one flannel material.
- Warp: Tencel 8/2 -- dark grey
- Weft: 1/2" strips cut from new flannel materials
- Weave structure: plain weave
- Sett: 16 epi
- # of shafts: 4 shafts on a Dundas travel loom treadled



Thank you for sharing your  
beautiful work.

Are there any additional projects to share?

If you would like to share your project at the next  
Seattle Weavers' Guild Meeting, email your photos and  
a short description to:

*hotofftheloom@seattleweaversguild.com*